

Wind Turbine Siting & Setback Policies in Ohio

Alexandria Mock
Government Edge, Inc.



Setback History

2008

The Ohio Legislature passes Senate Bill 221, creating Ohio's AEPS

Property line setback: 1.1 times the height of the turbine from its base to vertical blade tip (approximately 540 feet)

Habitable structure setback: 750 feet plus blade length (approximately 925 feet)

Important - Wind farm development in Ohio is regulated by the Ohio Power Siting Board (OPSB)

2011

Blue Creek Wind Farm and Timber Road Wind Farms are operational

2012

Habitable structure setback: increased to 1125 plus blade length, or approximately 1300 feet

2014

Property line setback: increased to the same as the habitable structure setback - 1300 feet - increasing the distance more than 2.5 times

Applications for new wind farms halt

2015-2016

Ohio House Bill 190 introduced to give individual counties which wanted wind farms to have the authority to choose to revert to the habitable structure setback of 1125 plus blade length

H.B. 190 dies in 131st General Assembly after 3 hearings

2017

Industry and Partners working to get solution into Biennial Budget

Proposal

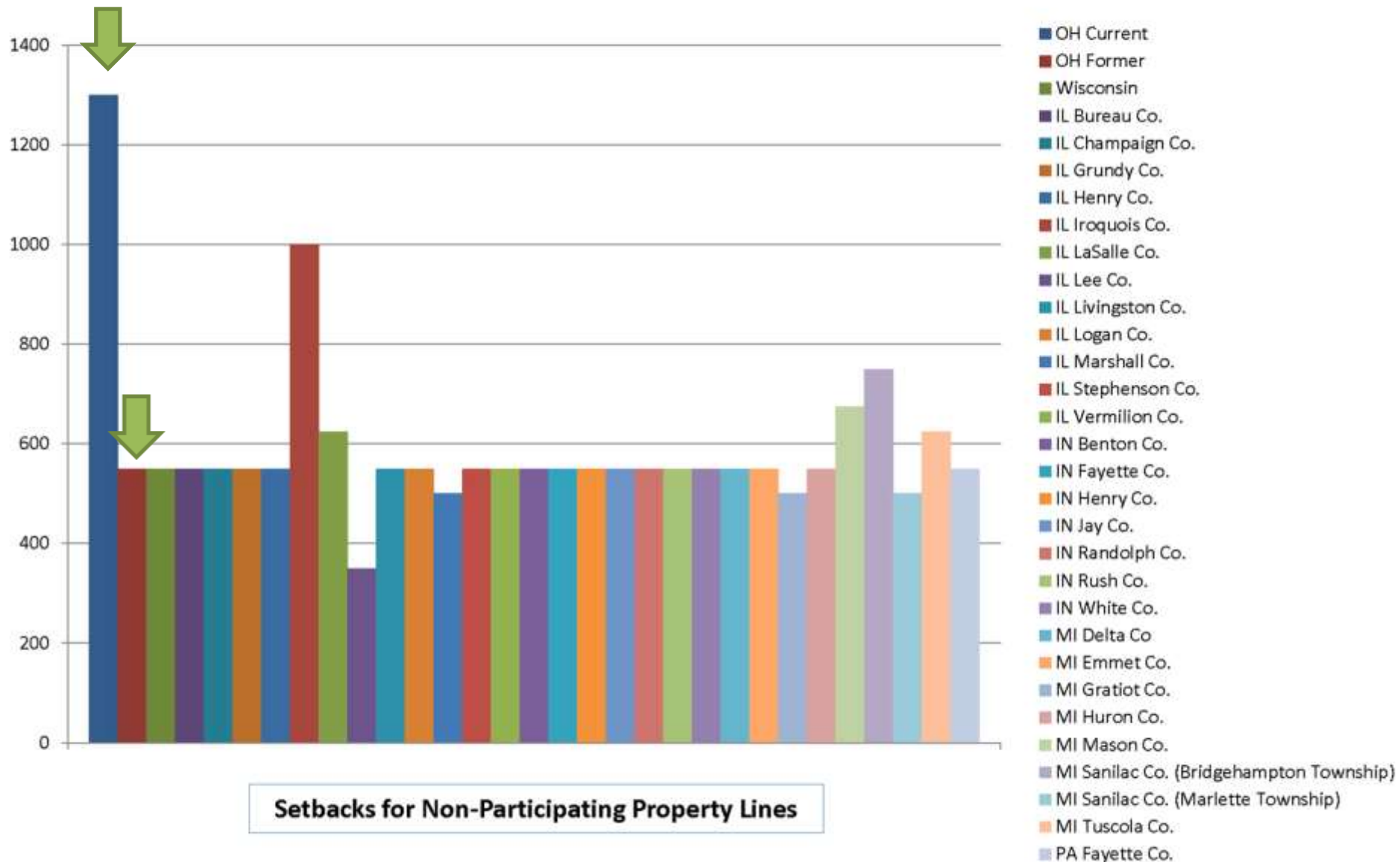
- Property line setback 1.2 times height of turbine from base to vertical blade tip
- Codify public notification provisions



Setback Comparison for Non-Participating Property Lines

Setbacks for a Standard Turbine

Regional Setbacks for Successful Projects Compared to New Ohio Standard



Blue Creek Wind Farm

Total acreage: 40,500

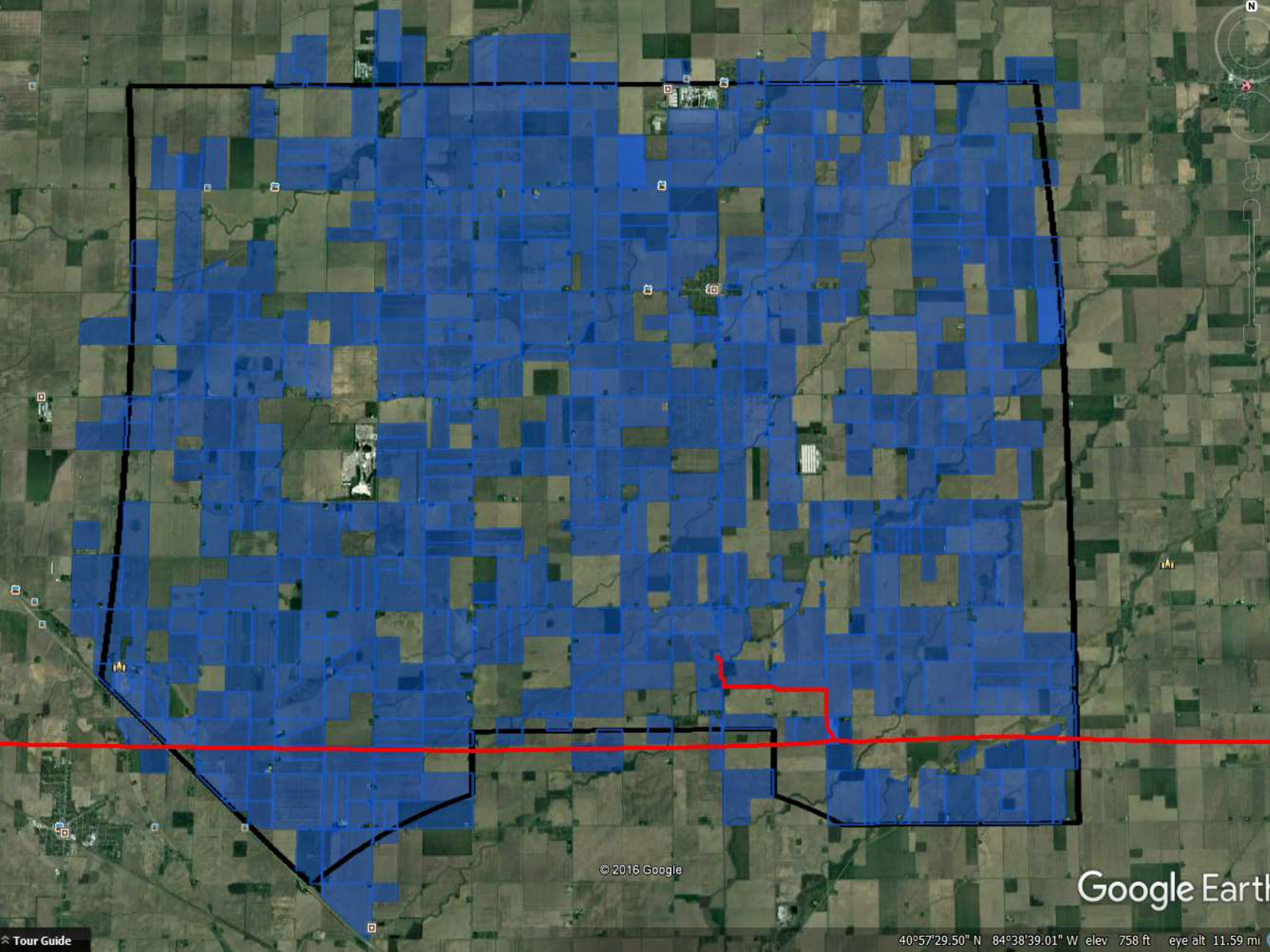
Total leased acreage: 24,500

Average turbine to residence: 1,684

Total landowners: 140

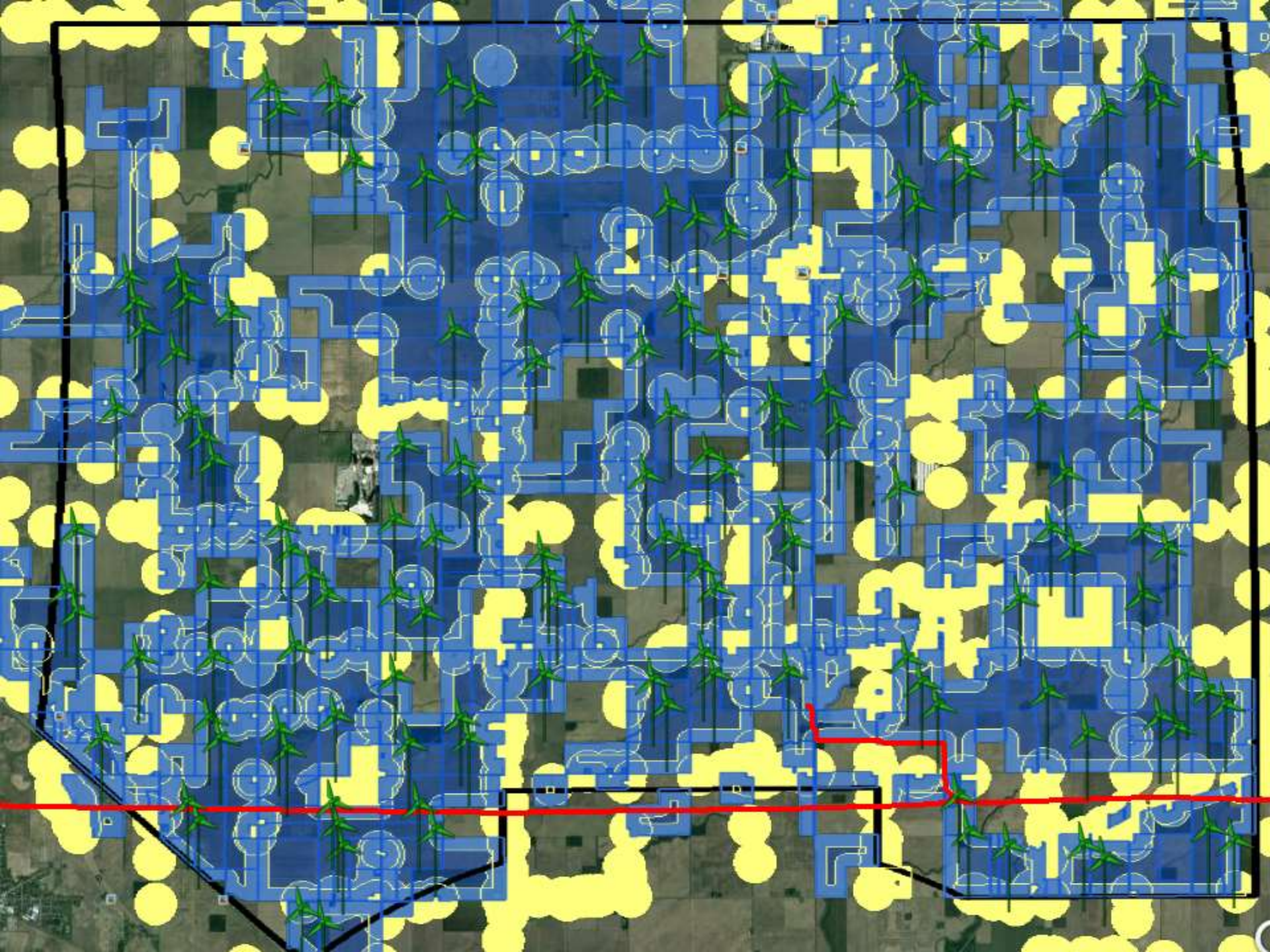
Total number of homes in project boundary: 760

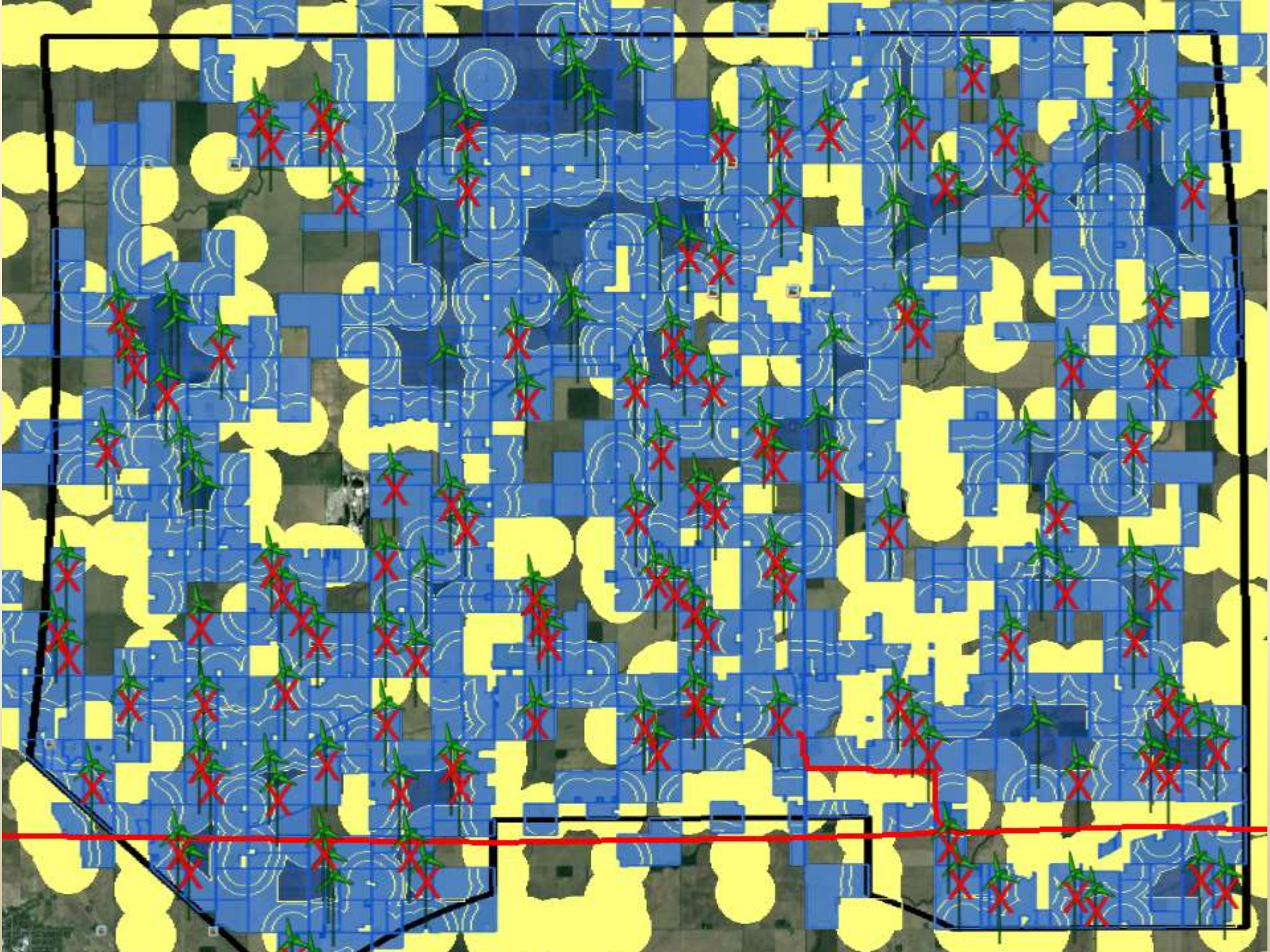




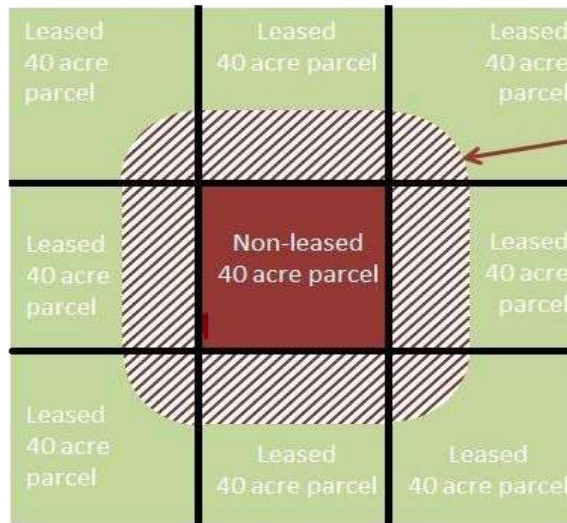
© 2016 Google

Google Earth

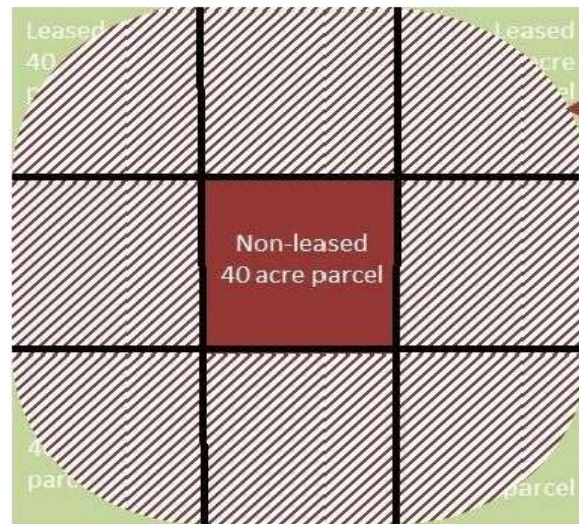




Private Property Rights and Siting in Ohio



Under previous setback requirements (1.1 times height of turbine from base to tip of highest blade – approx. 525 ft.), setbacks onto neighbors' property totaled **87 acres**, protecting neighbors' rights while still allowing wind development.



Current law created in 2014 by HB 483 (1125 ft. plus length of blade – approx. 1300 ft.) blocks wind development with setbacks onto neighbors' property totaling **283 acres**.



What's at stake?

- 2,950 MWs are in some phase of development
- \$5.9 billion in capital investment
- \$26.5 million annually in taxes
- \$19.8 million annually in landowner lease payments.



Questions?

